

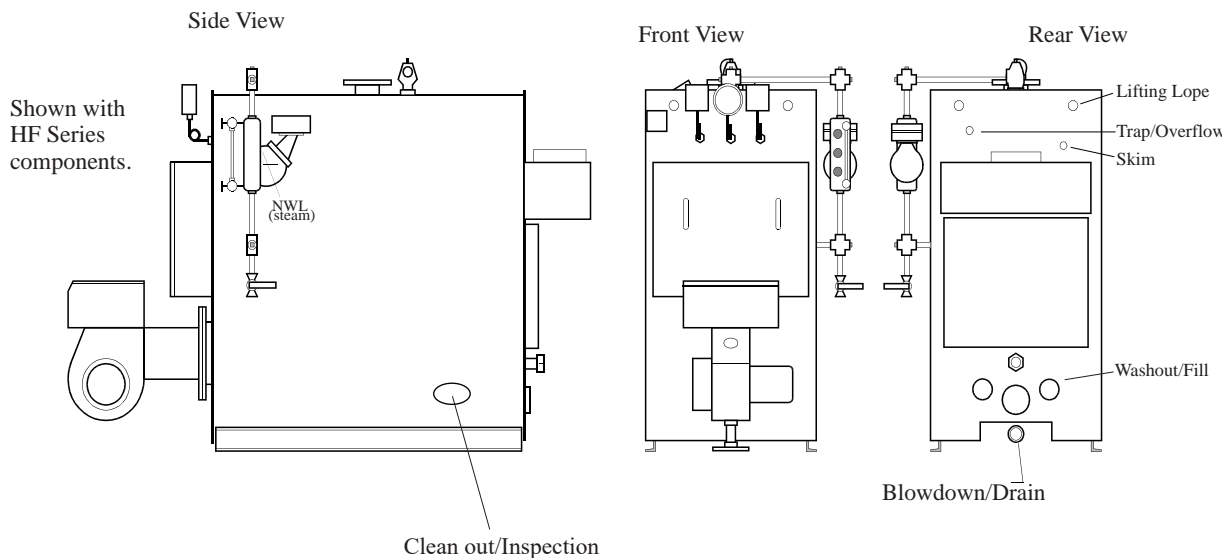
15 HP - 105 HP LES Boilers - New in Stock

- Dual Functionality; Low Pressure Steam 15 PSI or Hot Water 30 PSI
- Compact Design - Space Saver
- ASME Code Compliant - Section IV of ASME
- Designed to minimize emissions, enabling you to reduce carbon footprint
- Components ensure minimal downtime, translating into increased productivity for your business

Have questions or need help specifying this equipment? Email: ksummers@becequipment.com

Need help with getting parts for your equipment? Email: jhaug@becequipment.com

Need technical support or service for your equipment? Email: dschmitt@becequipment.com



DIMENSIONS

(LxWxH)

15HP: 64" x 40" x 72"	60HP: 121" x 46" x 79"
20HP: 76" x 40" x 72"	70HP: 123" x 46" x 86"
25HP: 76" x 40" x 72"	80HP: 128" x 46" x 86"
30HP: 86" x 40" x 72"	90HP: 138" x 46" x 86"
40HP: 96" x 40" x 72"	105HP: 154" x 46" x 86"
50HP: 112" x 46" x 79"	