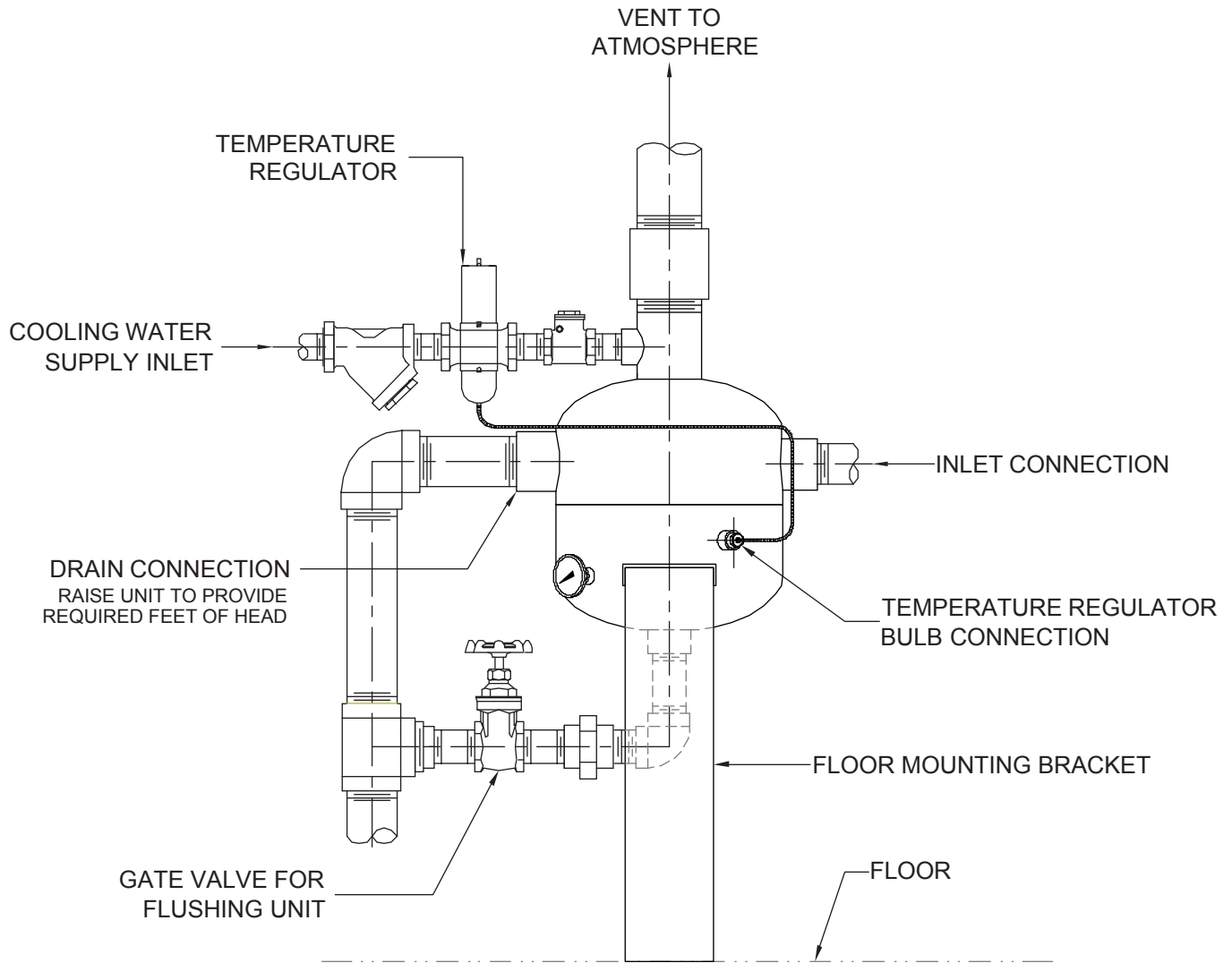


# CONDENSING UNIT TYPICAL INSTALLATION



**NOTES:**

1. TOP OF VENT SHOULD BE ABOVE HEAD HEIGHT (7'-0").
2. DRAIN MUST HAVE FREE FLOW TO SEWER.
3. TEMPERATURE OF DRAIN LIQUID IS CONTROLLED BY COLD WATER SUPPLY.
4. CONNECTIONS CAN BE FURNISHED THREADED, FLANGED OR BEVELED FOR WELDING.

**DATA REQUIRED FOR SIZING**

1. BOILER BLOWDOWN VALVE SIZE \_\_\_\_\_ INCHES
2. BOILER OPERATING PRESSURE \_\_\_\_\_ PSIG
3. PRESSURE OF COLD WATER SUPPLY \_\_\_\_\_ PSIG
4. TEMPERATURE OF COLD WATER \_\_\_\_\_ °F
5. DESIRED DRAIN DISCHARGE TEMPERATURE \_\_\_\_\_ °F
6. IF USED FOR CONTINUOUS BLOWDOWN \_\_\_\_\_ LBS/HR

**WILSON ENGINEERING**

1403 SW 7TH STREET, ATLANTIC, IOWA 50022 | TEL: 712-202-1610 | FAX 712-243-3440 | WILSONBLOWDOWN.COM

DATE: 09/15/97 | DRAWN BY: JR | APPROVED: | DWG No.: W-314

